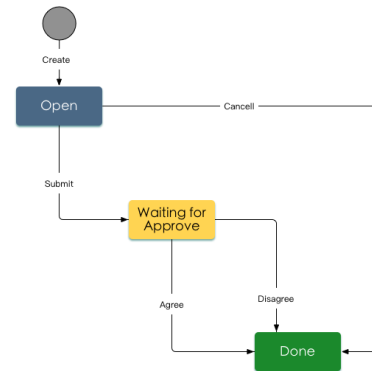


## Scenario 2: All the approvers must fill in comments, no declined option in the workflow.

- Feedback provided by all the approvers is mandatory. Otherwise the workflow will halt and wait for the comments to be provided.
- Approver can choose 'Agree' or 'Disagree' which has no impact on overall workflow.

### Workflow description

Sample workflow is on the right hand side:



OPEN

- Submitter can cancel the request before submitting the request to 'Waiting for Approve' status
- Submitter must select one of more approvers when submitting a JIRA issue

WAITING FOR APPROVE

- When approvers receive notification, they can choose either 'Agree' or 'Declined' workflow transition without particular order.
- When all the approvers provided feedback, workflow will move to 'DONE' status with pre-defined post-functions provide by PAP add-on.
- Approvers must provide feedback no matter they choose 'Agree' or 'Declined' option.

## Workflow Parameters setting:


1. Step: **OPEN**

Status: To Do

Transition Action	Target Step	Screen	Conditions	Validations	Post Functions	
Submit	<b>WAITING FOR APPROVE</b>		Only Reporter Condition			
Cancel	<b>DONE</b>		Only Reporter Condition		Update Issue Field: Set Resolution = Cancelled	

2. Step: **WAITING FOR APPROVE**

Status: Waiting for Approval

Transition Action	Target Step	Screen	Conditions	Validations	Post Functions	Screen shot of Post Function
Agree	<b>WAITING FOR APPROVE</b>	Workflow Screen	(Parallel Approval Process) User in Approvers Field	(Parallel Approval Process) Comment is required	(Parallel Approval Process) AGREE	<a href="#">blocked URL</a>
Decline	<b>WAITING FOR APPROVE</b>	Workflow Screen	(Parallel Approval Process) User in Approvers Field	(Parallel Approval Process) Comment is required	(Parallel Approval Process) AGREE	<a href="#">blocked URL</a>
Pass(Auto)	<b>DONE</b>	None	(Parallel Approval Process) Hide transition	 Do not set any validations for this action	Update Issue Field: Set Resolution = Done	

3. Step: **DONE**

Status: Done



Remember to associate the workflow with relevant issue types.