



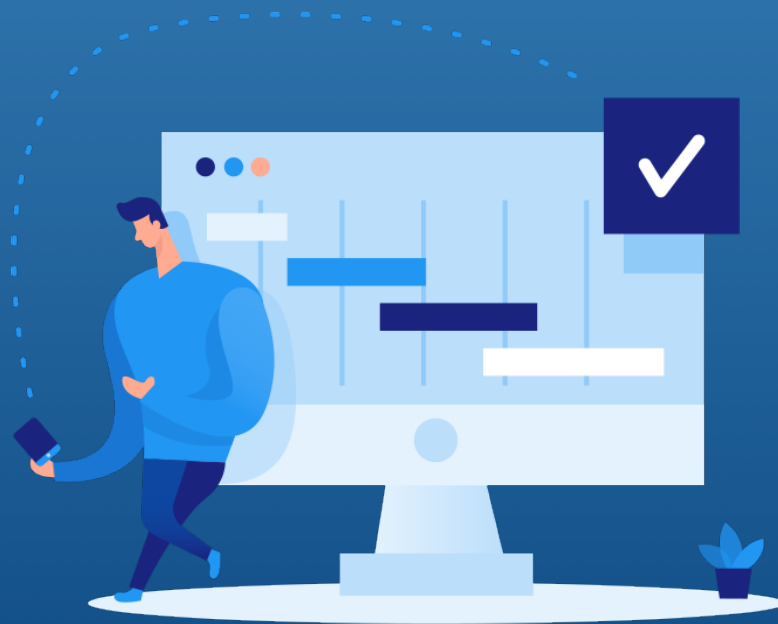
Xray for Jira

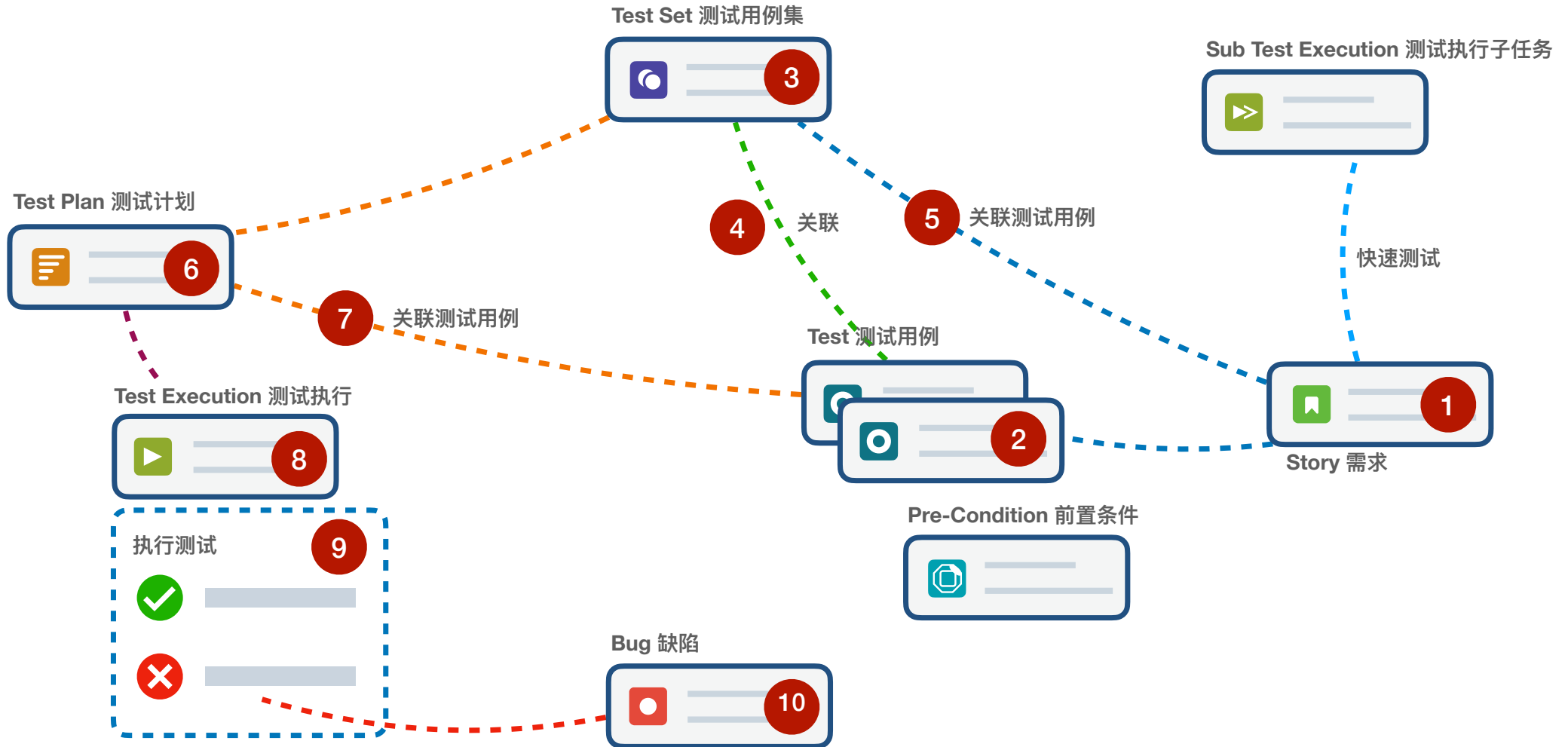
测试管理培训



韦京

jing.wei@unlimax.com





需求/开发 + 测试项目



Epic



Story 用户故事



Bug 缺陷



Task 任务



Subtask 子任务



Sub Test Execution 测试执行子任务



Test 测试用例



Test Set 测试用例集



Pre-Condition 前置条件



Test Plan 测试计划









Test Execution 测试执行



项目规划 - 独立的测试项目

需求/开发 项目

-  Epic
-  Story 用户故事
-  Bug 缺陷
-  Task 任务
-  Subtask 子任务
-  Sub Test Execution 测试执行子任务

Xray 测试项目

-  Test 测试用例
-  Test Set 测试用例集
-  Pre-Condition 前置条件
-  Test Plan 测试计划
-  Test Execution 测试执行

需求/开发 项目



Epic



Story 用户故事



Task 任务



Subtask 子任务



Sub Test Execution 测试执行子任务

Xray 测试用例项目



Test 测试用例



Test Set 测试用例集



Pre-Condition 前置条件

Xray 测试执行项目



Test Plan 测试计划



Test Execution 测试执行



Bug 缺陷



编写

编写测试用例
导入测试用例



整理

整理测试用例集
整理测试用例库



执行

制定测试计划
临时测试
执行测试



报告

测试计划报告
需求追踪报告
需求覆盖率报告



XRAY

- Miscellaneous**
- Custom Fields
- Issue Type Mapping
- Requirement Coverage
- Requirement Projects
- Document Generator
- Test Statuses
- Test Step Statuses
- Default Column Layouts
- Parameter Values Lists
- Integrity Checker
- License Management
- Cloud Migration

MYGROOVY

- MyGroovy console
- MyGroovy admin scripts
- MyGroovy workflow script registry
- MyGroovy listeners
- MyGroovy REST scripts
- MyGroovy scripted fields
- MyGroovy scheduled tasks
- MyGroovy JQL functions
- MyGroovy global objects
- MyGroovy audit log

Inline Execute Tests
When this option is enabled, Test Runs can be executed inline, directly from the Test Execution and Test issue view pages. This option is only available if the final Test Run Status can be manually set.

Restrict tests execution to assignee
When this option is enabled, tests execution is restricted to the assignee user.

Fail All Steps/Examples
When this option is enabled, whenever the status of a Test Run is changed to FAIL, all the Test Steps/Examples in TODO Status will also have their Statuses updated to FAIL.

Restrict automated Test status
When this option is enabled, the status of automated Test Runs can't be set manually. It can only be modified through the import of automated test results action.

Can Edit TestRun Dates
When this option is enabled, the user can edit the Started On date in the Test Execution Details page.

Enable Test Run Status history log in Test Executions
When this option is enabled, the "Updated Date" of a Test Execution is updated when a Test Run is executed, and a History entry is created on the Test Execution.

Defect Links

Link Defects with Test
When this option is enabled, the defects created in the context of a test run are automatically linked with the respective Test issue.

Link Defects with Test Execution
When this option is enabled, the defects created in the context of a test run are automatically linked with the respective Test Execution issue.

Link Defects with Requirement
When this option is enabled, the defects created in the context of a test run are automatically linked with the respective Requirement being tested.

User Groups allowed to add Xray Issue Types
jira-administrators x
Select the User Groups which are allowed to add Xray Issue Types to a project in the project settings

Notifications
User Groups allowed to
Select the User Groups which are allowed to add/remove Xray notifications to the Notification Scheme in the project settings

允许哪些用户为项目
添加 Xray 问题类型



The screenshot shows the Jira 'Issue Type Mapping' configuration page. The left sidebar contains a navigation menu with '管理' (Management) at the top, followed by '应用程序', '项目', '问题', '管理插件' (highlighted with a red circle), '用户管理', '最新升级报告', and '系统'. Below this are sections for 'ATLASSIAN MARKETPLACE', 'ADVANCED ROADMAPS FOR JIRA', 'INSIGHT', and 'XRAY'. 'Issue Type Mapping' is highlighted in the sidebar with a red circle. The main content area is titled 'Issue Type Mapping' and includes a search bar and a list of 'Available Issue Types' such as Test, Test Set, Test Execution, Pre-Condition, Test Plan, Service Request with Approvals, Support, Sub-Task, Technical task, Sub Test Execution, Bug, Epic, Travel Provider, Story, Task, and Improvement. On the right, there are two columns: 'Requirement Issue Types' (containing Epic and Story) and 'Defect Issue Types' (containing Bug). Red callout boxes with arrows point to these columns, containing the text '拖拽 需求 类型到这里' (Drag requirement types here) and '拖拽 缺陷 类型到这里' (Drag defect types here).

为已有项目添加测试管理功能

The screenshot shows the 'Project Settings' page in Jira. A red callout box highlights the 'Add Xray Test Types' button. A dropdown menu is open, showing options: 'Enable Xray Requirement Coverage', 'Import Automated Steps', and 'Add Xray Issue Types'. The 'Add Xray Issue Types' option is selected. The page content includes sections for 'Project Workflow and Interface', 'Issue Types', 'Versions', 'Modules', and 'Users'. The 'Issue Types' section lists Bug, Epic, Story, Sub-Task, and Task, with 'Task' selected. The 'Versions' section lists Version 3.0, Version 2.0 (released 08/September/22), and Version 1.0 (released 25/August/22). The 'Modules' section indicates that no modules are currently used for this project.

为已有项目应用 Xray 配置



Test Set 测试用例集



Pre-Condition 前置条件



Test 测试用例



Test Plan 测试计划



Test Execution 测试执行



Sub Test Execution 测试执行子任务

问题类型

默认界面方案



Test 测试用例

XRAY: Xray Test Screen Scheme



Test Set 测试用例集

XRAY: Xray Test Set Screen Scheme



Test Execution 测试执行

XRAY: Xray Test Execution Screen Scheme



Pre-Condition 前置条件

XRAY: Xray Pre-Condition Screen Scheme



Test Plan 测试计划

XRAY: Xray Test Plan Screen Scheme



Sub Test Execution 测试执行子任务

XRAY: Xray Sub Test Execution Screen Scheme